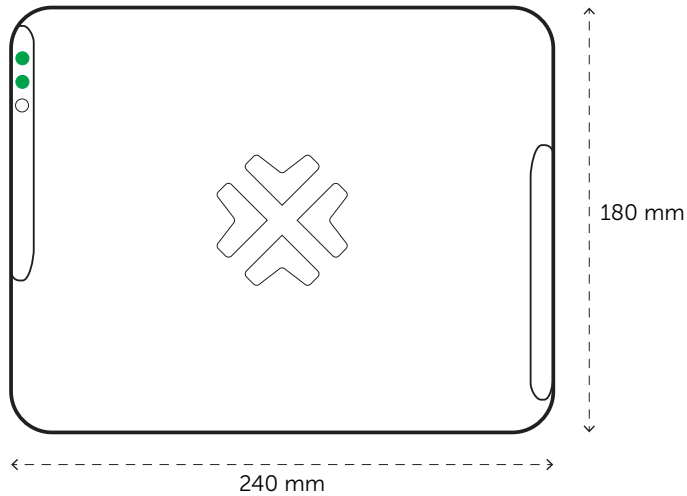


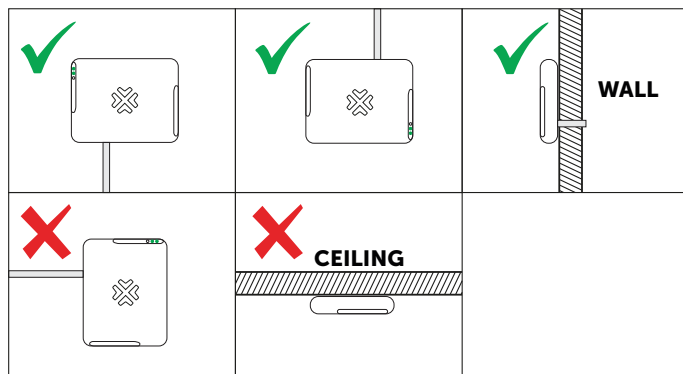
Fidelix FX-AirRECEIVER installation instructions

Dimensions:



Installation location and direction:

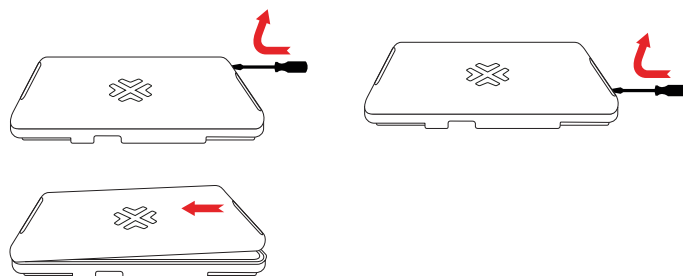
Always install the receiver straight. The indication LEDs should always be either on the left or on the right side, never on the topmost or bottommost side of the receiver as indicated in the picture below:



Removing the cover:

1. Use a 3-4mm flat head screwdriver and push the tip into the rectangular hole on the short side of the unit. Push the screwdriver straight in and then pull it outwards approximately 5mm.
2. Remove the screwdriver and repeat the process on the lower hole.
3. Slide the cover to the side to release the hinged side.

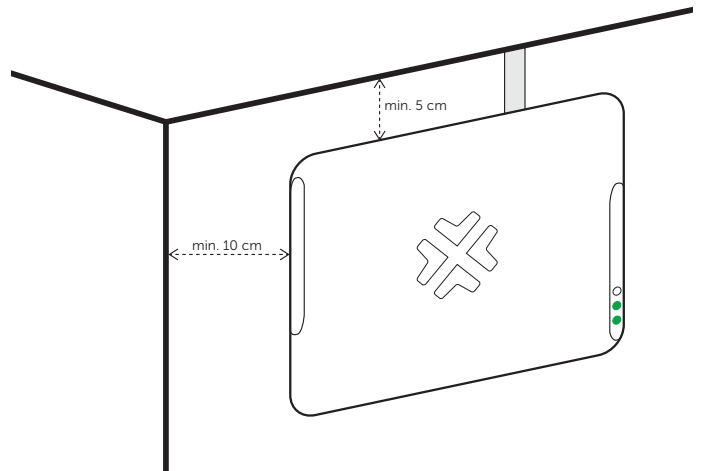
Tip! A gentle anticlockwise movement makes it easier to release the cover.



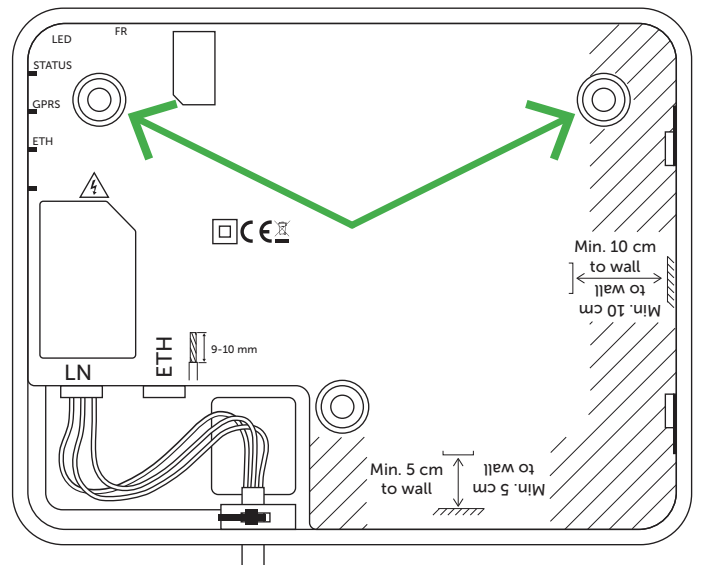
Installation:

Installation must only be carried out by authorised installers according to the relevant electrical safety regulations. Appropriate disconnect device shall be used as part of the building installation. It should be close to the device and easily accessible to the user. For example: Power supply cable with socket. Note that earth (PE) is optional and can be excluded if it is not required. **The unit must have a continuous power supply.** Lighting power supply with movement detectors or timers is not permitted.

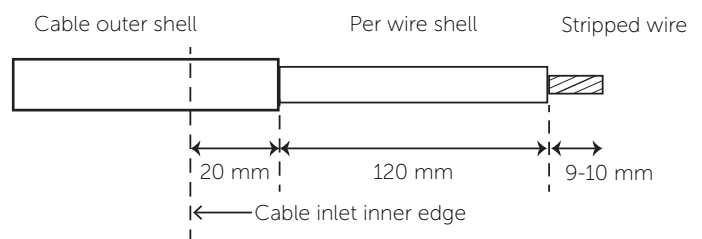
IMPORTANT! Pay attention to the minimum distances to the corners specified inside the unit. Ignoring these instructions can render it **difficult or even impossible to open the unit without damaging or breaking it.**



1. Find a suitable place to install the receiver. Mark the holes and pre-drill (depending on the material)
2. Screw in the two upper screws loosely. Recommended screws are 4.2mm diameter pan head.



3. Strip the connection cable according to the following diagram:

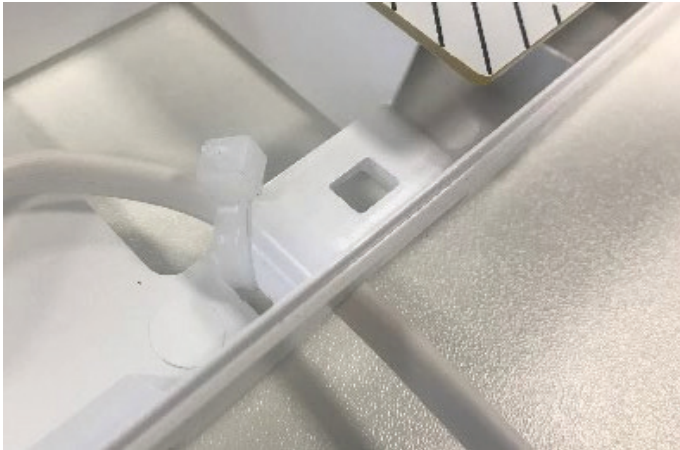


4. Thread the power supply cable through the cable inlet and connection the fitting according to the markings on the circuit board. If a multi-strand cable is used then the spring-loaded block must be opened with a small screwdriver before feeding in the cable.

5. If the unit is connected with cables which aren't fixed to the wall then a cable tie must be threaded through the hole and around the cable. Tighten the cable tie firmly and ensure that the cable is securely attached by pulling on the cable.

► Fidelix FX-AirRECEIVER installation instructions

Tip! If the unit is fitted with a cable diameter < 8mm or a flat cable, the cable tie can be attached as in the picture below:



To dismantle the terminal block, lift it upwards and pull it straight out. If an empty terminal block is to be dismantled it is simplest to attach a cable in the terminal as in the picture below:



6. Connect the Ethernet cable; feed the cable into the inlet and connect it to the Ethernet port.

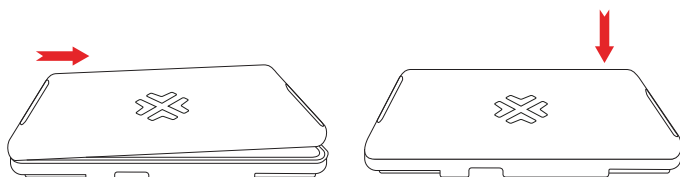
7. Screw in the final assembly screw and tighten the other two assembly screws.

8. Connect power to the unit and check at the status lights up fixed green (the unit flashes red/green for 1-2 mins).

9. Fit the cover: Hook the cover into place on the left side (seen with the cable inlet below) by sliding the cover to the right.

Tip! It is easiest to line up the top left corner of the unit first and then slide in the bottom left corner until the left side lines up between the cover and base.

Press down the cover until both clips hold the cover firmly in place.



IMPORTANT!

Appropriate disconnect device shall be used as part of the building installation. It should be close to the device and easily accessible to the user. For example: Power supply cable with socket.

TÄRKEÄÄ!

Asianmukaista erotuslaitetta on käytettävä osana rakennukseen asennusta. Sen tulee sijaita laitteen lähellä ja olla helposti käyttäjän ulottuvilla. Esimerkiksi: Verkkovirtajohto pistokkeella.

VIKTIGT!

Elinstallationer måste ha en passande frikopplingsanordning för elnätet. Den ska vara nära enheten och lättåtkomlig för användaren. Till exempel: Strömkabel med plugg.

For more information, consult the FX-AirRECEIVER product page:

